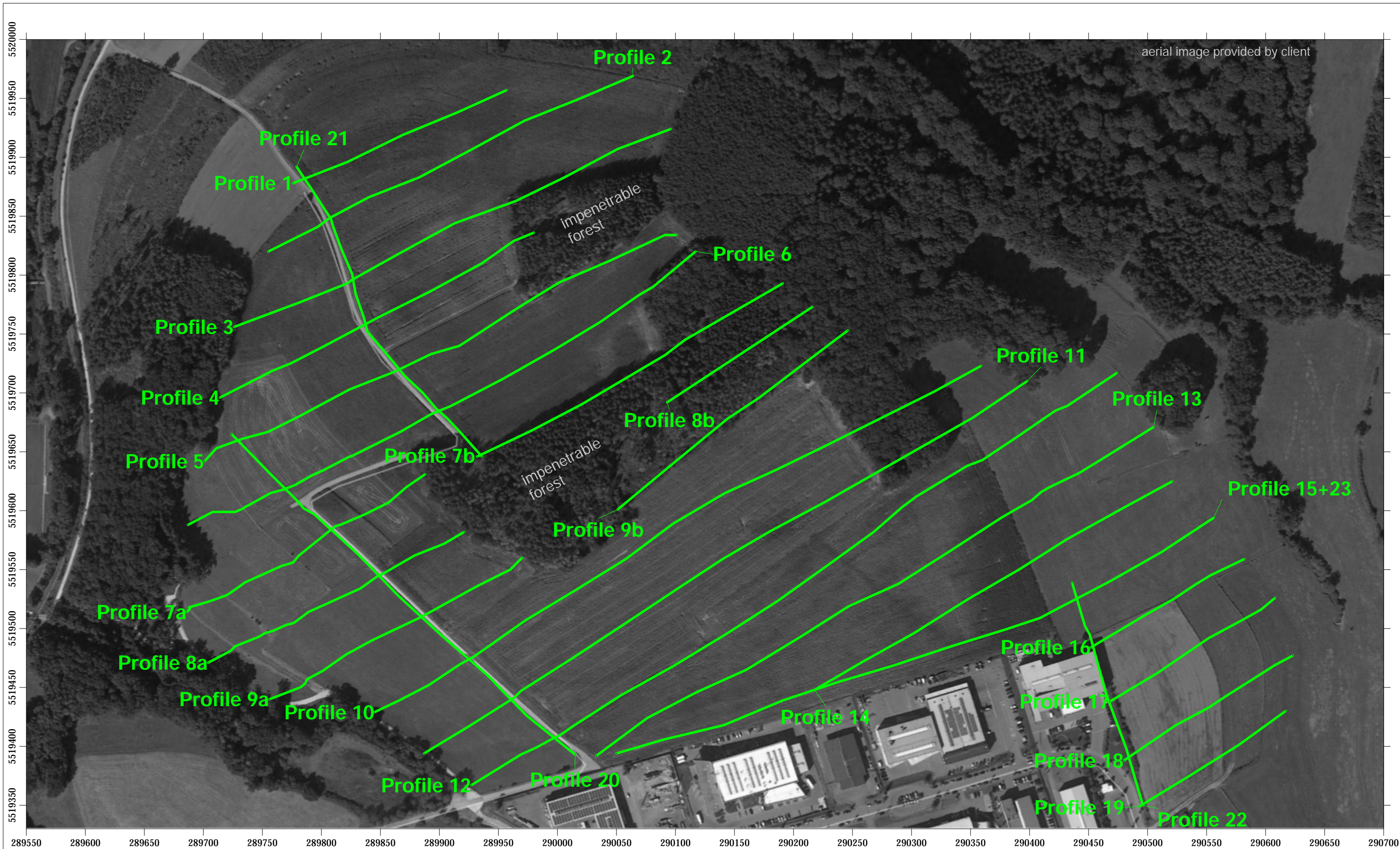
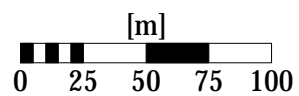


Annexe 5

geo-electric measurements



Legend:  ERT Profile



DRAFT

Project: Bissen (LU) ERT inhomogeneities survey

Scale	1 : 3.000
Coordinate syst.	UTM zone 32N
Ellipsoid	WGS84
Project No.	660-17-027
Processed by	Diplom Geophysiker F.Oestmann
Datum	21.12.2017

Electrical Resistivity Tomography
(ERT) Inhomogeneities Survey

Geophysical Survey Map

Appendix 1

Client:

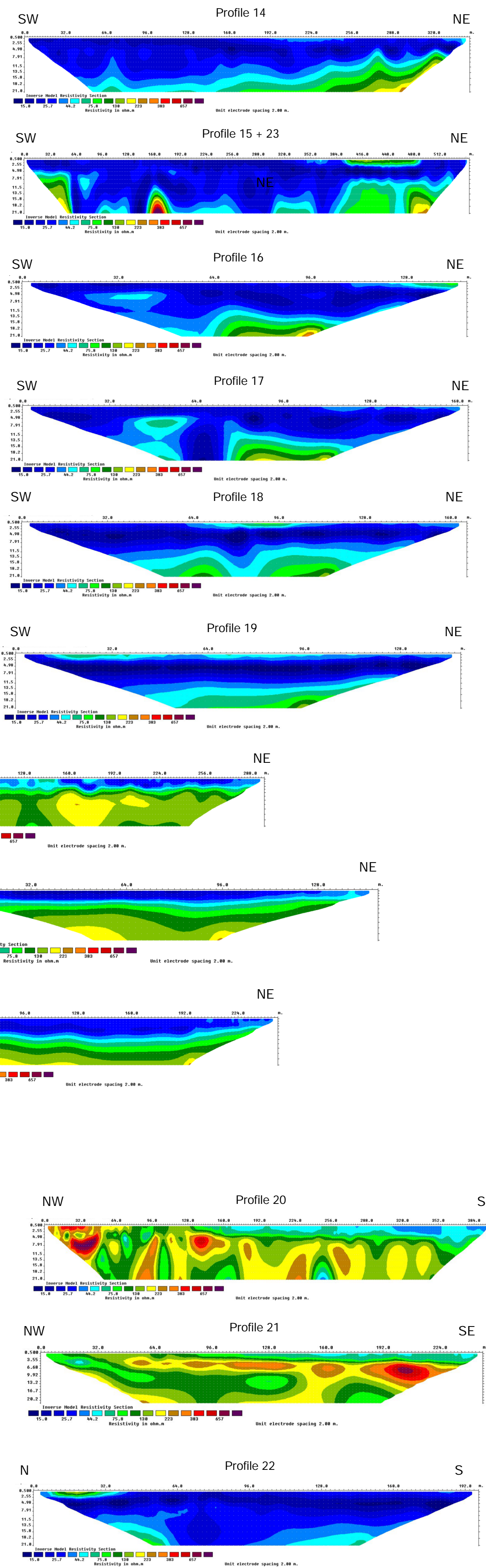
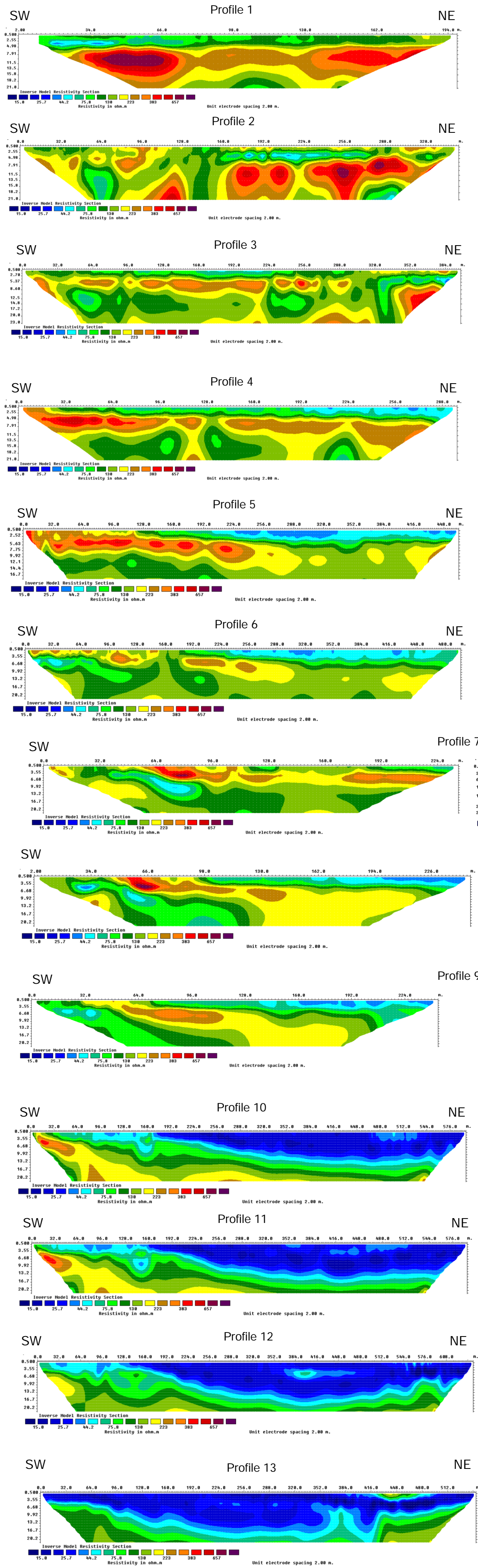
Fugro Eco Consult s.à r.l.
3, rue Henri Tudor
L - 5366 Munsbach

Contractor:





Fugro Consult GmbH
Wolfener Str. 36
12681 Berlin

P:/...2017/660_17_02X_FugroEcoConsult_Inhomogenität Bissen\data\surfer1*



DRAFT

Project: Bissen (LU) ERT inhomogeneities survey		Appendix 2		
Units	vertical: [m], horizontal: [m]	Electrical Resistivity Tomography (ERT) Inhomogeneities Survey Fieldplots <i>(DRAFT)</i>	Client:	Contractor:
Coordinate syst.	UTM zone 32N			
Project No.	660-17-027			
Processed by	Diplom Geophysiker F.Oestmann			
Datum	22.12.2017			
		3, rue Henri Tudor L - 5366 Munsbach	Wolfener Str. 36 12681 Berlin	